

# Driver Update

Objective: To update the iTrail driver so that the Windows computer and iTrail software will recognize the device when connected. Please click the following link:

[www.myitrail.com/downloads.html](http://www.myitrail.com/downloads.html)

- Select the iTrail Driver Uninstall link and run the driver uninstaller

**IMPORTANT NOTE:** Install the iTrail driver first before connecting the gps logger, after you have installed the iTrail driver and connected the gps logger you can then install the iTrail software v3.3.

## Downloads

Description	Filename	Download
iTrail Software v3.3 for All Windows Versions (Updated 5/5/11)	iTrail-3.3.exe	<a href="#">Link</a>
iTrail Windows Driver (Updated 2/6/11)	iTrail_Driver.exe	<a href="#">Link</a>
iTrail Driver Uninstall (Added 9/30/10)	iTrail_Uninstall_Driver.exe	<a href="#">Link</a>

- After the driver is uninstalled select the iTrail Windows Driver link and SAVE TO THE DESKTOP.

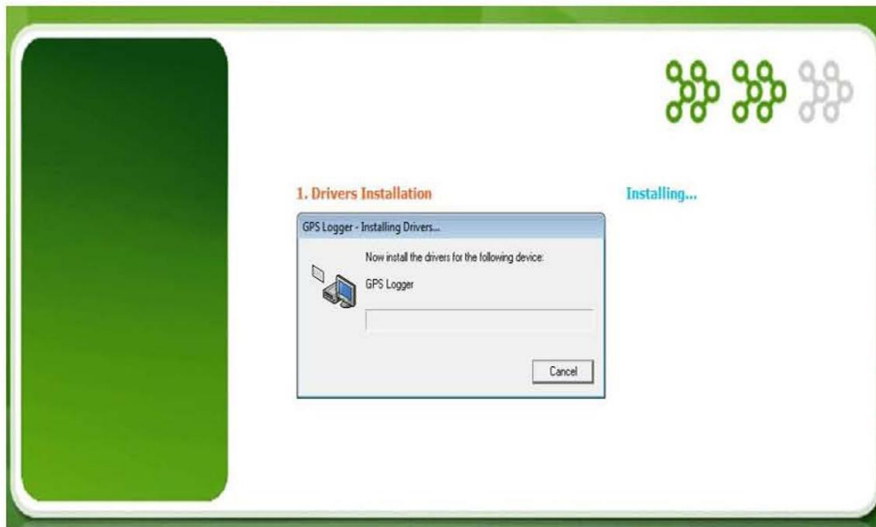
**IMPORTANT NOTE:** Install the iTrail driver first before connecting the gps logger, after you have installed the iTrail driver and connected the gps logger you can then install the iTrail software v3.3.

## Downloads

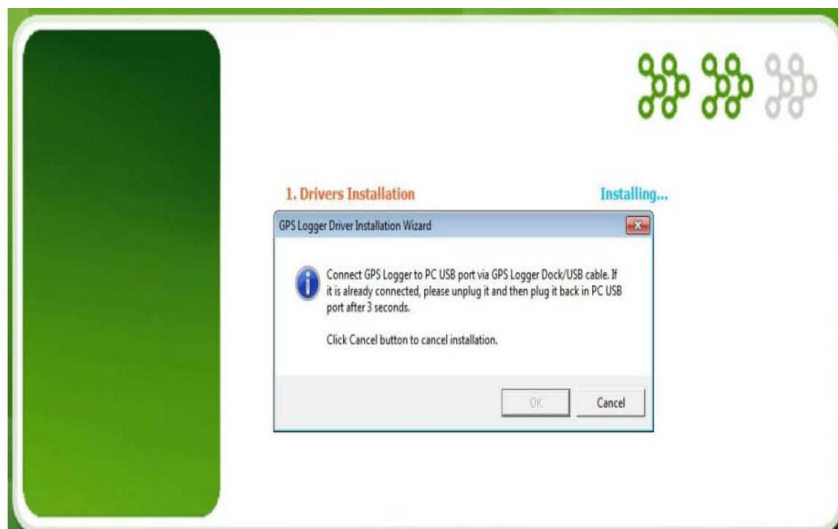
Description	Filename	Download
iTrail Software v3.3 for All Windows Versions (Updated 5/5/11)	iTrail-3.3.exe	<a href="#">Link</a>
iTrail Windows Driver (Updated 2/6/11)	iTrail_Driver.exe	<a href="#">Link</a>
iTrail Driver Uninstall (Added 9/30/10)	iTrail_Uninstall_Driver.exe	<a href="#">Link</a>

- Right click the new icon on your desktop labeled itraildriver.exe and select Run As Administrator.
- Click Install Device Driver





- A message will appear asking you to connect the logger to PC USB port.



- After the install is completed remove the logger from your computer and open the iTrail software. Click the Setup Device icon at the top middle that looks like a hammer. There will be a red dot and say Device Disconnected. Plug the logger into the same usb port. Now the Setup Device window will turn from red to green and say Device Connected.